

# Custom Chemical Injection Systems for Coal Ash Pond Effluent Remediation



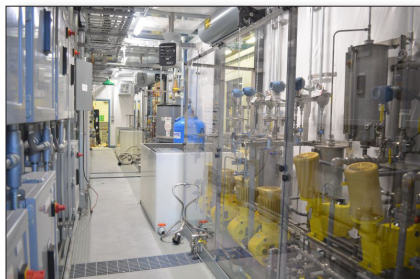
Global Chem-feed (GCS) is fully engaged in remediating ash ponds at multiple sites on both active and retired coal-fired power plants. GCS custom manufactured Chem-feed systems enable plant owners to meet the new federal CCR/ELG regulations.

## CHEM-FEED SYSTEMS

GCS provides custom manufactured chemical injection systems to for treatment of coal ash pond effluent for reintroduction into the environment and watersheds. Ash pond chemistry and flow rates vary. GCS systems are custom built to meet the client's requirements and site specifications.

Many site specific systems include:

- Acid Feed Systems
- Caustic Feed Systems
- Polymer Feed Blending Systems
- Sodium Bisulfite Feed Systems



pH systems behind splash shields



Environmental and safety systems



Tote slips with containment



Polymer injection systems

## SHELTER ENCLOSURES

CCR systems can be provided in shelter enclosures that are customized to include:

- Safety Shower / eye wash stations
- Full insulation – heating / air conditioning
- Roll-up or barn-style doors for tote access
- Tote slips
- Spill containment
- Water heaters - process
- Electrical & control suite
- Monitoring/sampling



# MODULAR SYSTEMS

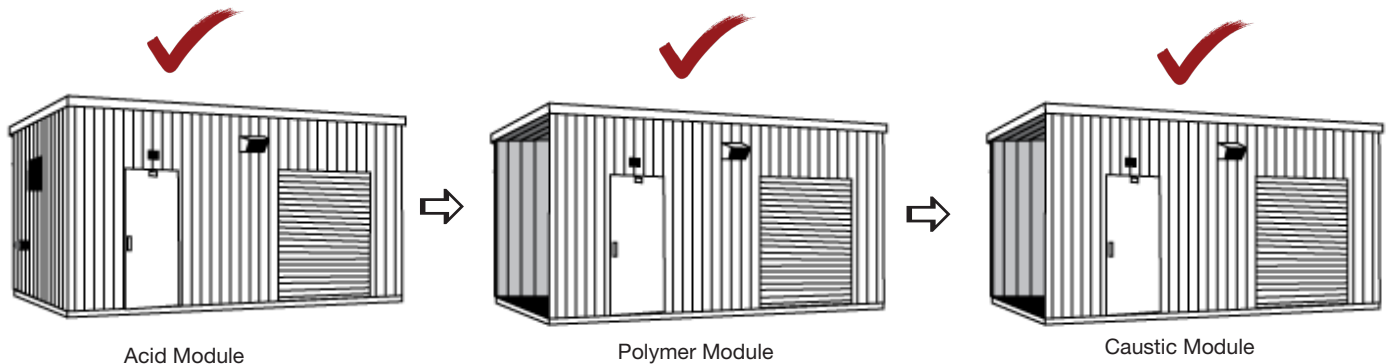
Modular options offer clients an economical solution, minimizing additional time and cost associated with fully customized systems.

With modular systems the client chooses only the specific pre-engineered systems they require. Choose from:

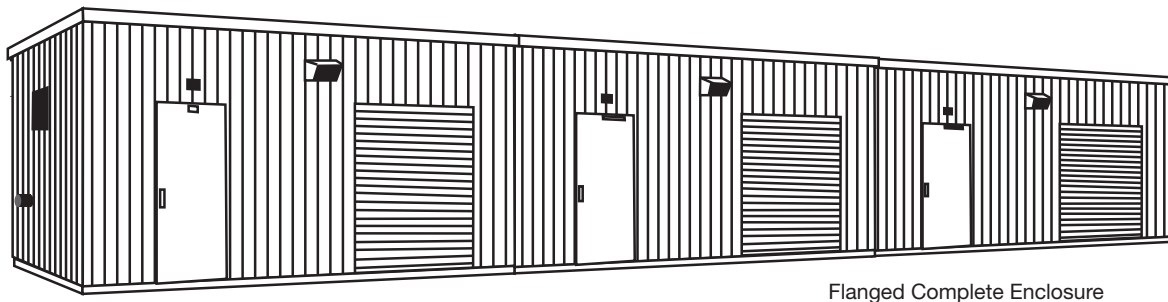
- Acid systems
- Polymer systems
- Caustic systems

Modules can be customized to include sampling / monitoring for pH, TDS and TSS of influent and/or effluent.

First: The client chooses the module containing the individual systems required for their particular application. Each module is fitted out with pumps /totes sized to meet client design specifications.



Second: Selected modules are joined together at site with a single point customer connection for electrical and control signal.



For more information, contact:

**Scott Wynn**

*Regional Sales Manager*

Office: 215-675-2777 x105

Cell: 267-963-7020

Email: ScottW@GlobalChem-feed.com

**Matt C. Gallagher**

*Regional Sales Manager*

Office: 215-675-2777 x113

Cell: 267-966-5481

Email: MattG@GlobalChem-feed.com



**Global Chem-feed Solutions, LLC**  
2015 Stout Drive  
Warminster, PA 18974  
215-675-2777  
[www.globalchem-feed.com](http://www.globalchem-feed.com)

